

# MonQueST Summary Profile 2006

## Assessment Procedures

### Summary Information

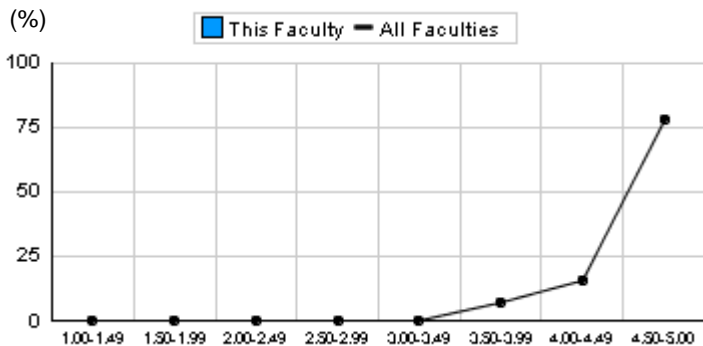
The Summary Profile is an accumulation of data from MonQueST *Assessment Procedures* evaluations for all faculties from Semester 1, 2002 up to and including data for Semester 1 and 2, 2006. The following table gives a breakdown of the number of *Assessment Procedures* evaluations conducted across faculties in 2006.

<b>Faculty</b>	<b>Year 2006</b>
Business and Economics	29
<b>Total</b>	<b>29</b>

# Question 1.1

I understood the contribution which each of the subject's assessment components would make to the calculation of my final grade.

## All Faculties

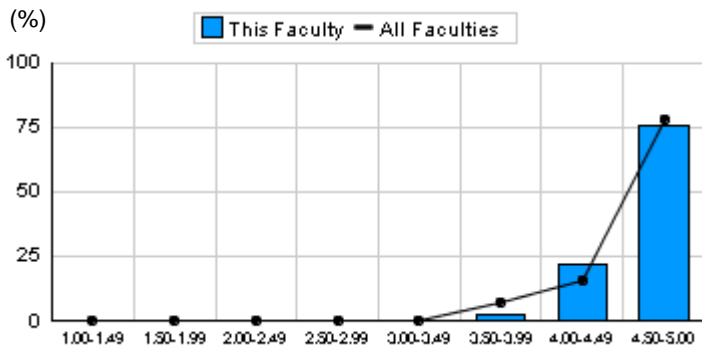


Summation of Median Ratings

Percentiles		
10th = 4.00	20th = 4.33	30th = 4.52
40th = 4.60	50th = 4.65	60th = 4.69
70th = 4.75	80th = 4.81	90th = 4.85

Mean = 4.56  
 SD = .30  
 N = 90  
 Overall Median = 4.65

## Business and Economics



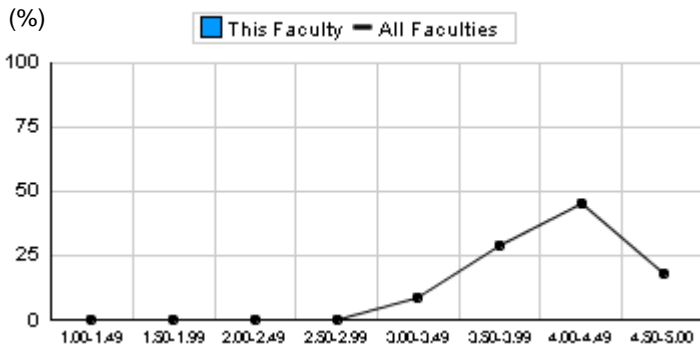
Summation of Median Ratings

Percentiles		
10th = 4.21	20th = 4.33	30th = 4.50
40th = 4.52	50th = 4.60	60th = 4.65
70th = 4.69	80th = 4.75	90th = 4.81

Mean = 4.55  
 SD = .25  
 N = 37  
 Overall Median = 4.60

Before each of the subject's assessment components I understood what that component would require me to do.

**All Faculties**

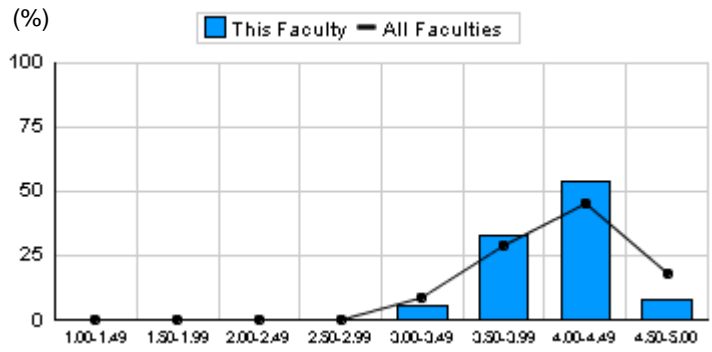


Summation of Median Ratings

Percentiles		
10th = 3.50	20th = 3.68	30th = 3.90
40th = 4.00	50th = 4.06	60th = 4.13
70th = 4.24	80th = 4.33	90th = 4.53

Mean = 4.04
SD = .40
N = 91
Overall Median = 4.06

**Business and Economics**



Summation of Median Ratings

Percentiles		
10th = 3.56	20th = 3.68	30th = 3.86
40th = 4.00	50th = 4.04	60th = 4.08
70th = 4.17	80th = 4.23	90th = 4.25

Mean = 4.01
SD = .32
N = 37
Overall Median = 4.04

Each assessment component's requirements fell within the general area of the subject's content.

## All Faculties



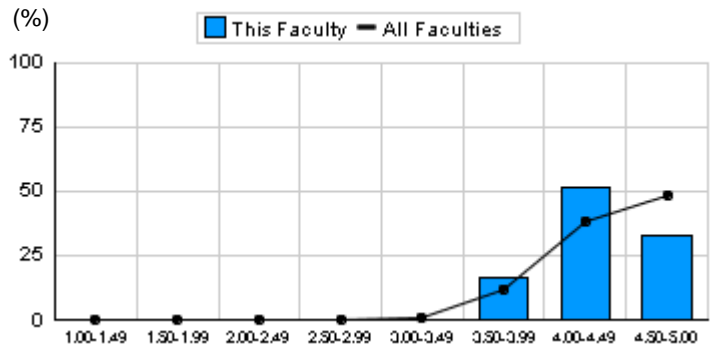
Summation of Median Ratings

### Percentiles

10th = 3.93	20th = 4.03	30th = 4.15
40th = 4.29	50th = 4.45	60th = 4.52
70th = 4.59	80th = 4.71	90th = 4.80

Mean = 4.38
SD = .33
N = 91
Overall Median = 4.45

## Business and Economics



Summation of Median Ratings

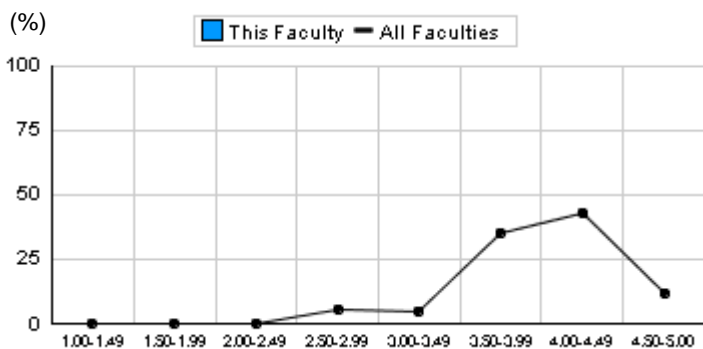
### Percentiles

10th = 3.94	20th = 4.00	30th = 4.10
40th = 4.22	50th = 4.30	60th = 4.38
70th = 4.50	80th = 4.56	90th = 4.71

Mean = 4.31
SD = .28
N = 37
Overall Median = 4.30

Before each assessment component, I understood what I would need to do to satisfy each of the different grades or marks possible for that component.

## All Faculties

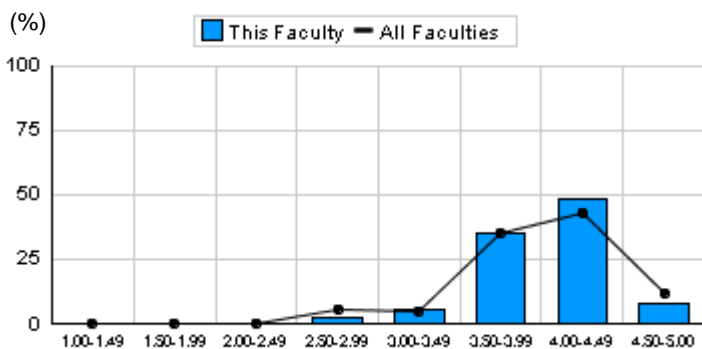


Summation of Median Ratings

Percentiles		
10th = 3.38	20th = 3.68	30th = 3.82
40th = 3.91	50th = 4.02	60th = 4.07
70th = 4.17	80th = 4.30	90th = 4.50

Mean = 3.97
SD = .43
N = 91
Overall Median = 4.02

## Business and Economics



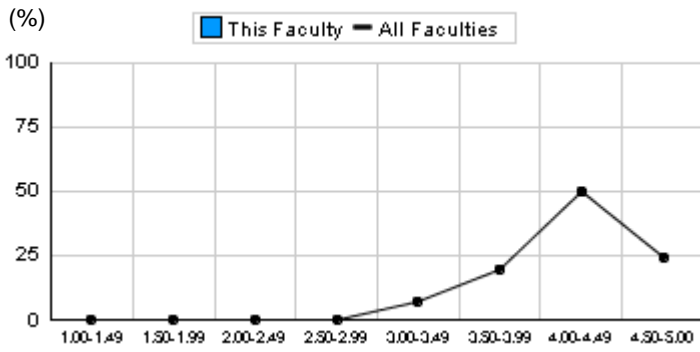
Summation of Median Ratings

Percentiles		
10th = 3.50	20th = 3.71	30th = 3.81
40th = 3.91	50th = 4.04	60th = 4.07
70th = 4.07	80th = 4.19	90th = 4.30

Mean = 3.95
SD = .39
N = 37
Overall Median = 4.04

The workload needed for a minimum passing mark on an assignment matched its contribution to the final grade.

**All Faculties**

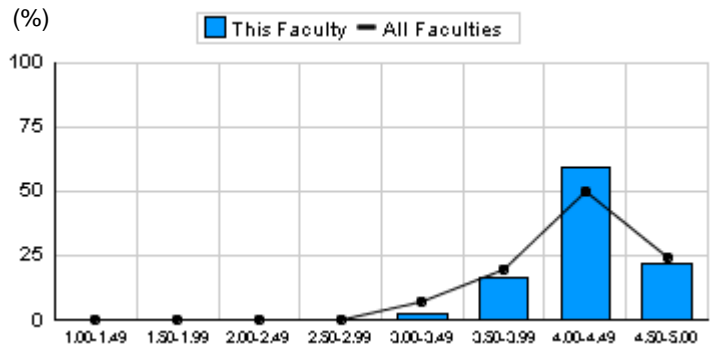


Summation of Median Ratings

Percentiles		
10th = 3.60	20th = 3.89	30th = 4.00
40th = 4.09	50th = 4.14	60th = 4.21
70th = 4.32	80th = 4.50	90th = 4.64

Mean = 4.15
SD = .39
N = 88
Overall Median = 4.14

**Business and Economics**



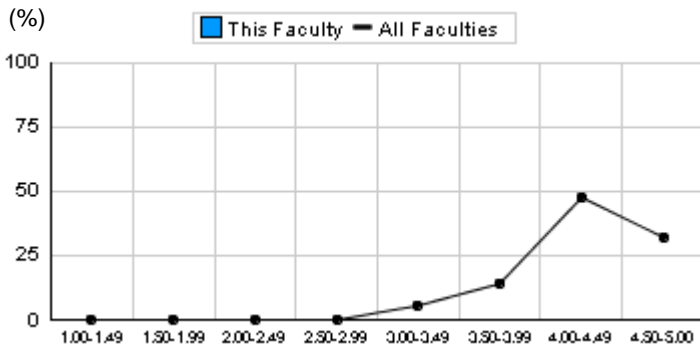
Summation of Median Ratings

Percentiles		
10th = 3.89	20th = 3.95	30th = 4.07
40th = 4.11	50th = 4.14	60th = 4.19
70th = 4.25	80th = 4.50	90th = 4.56

Mean = 4.17
SD = .29
N = 37
Overall Median = 4.14

I found that the subject's assignments improved my understanding of the subject's content.

**All Faculties**

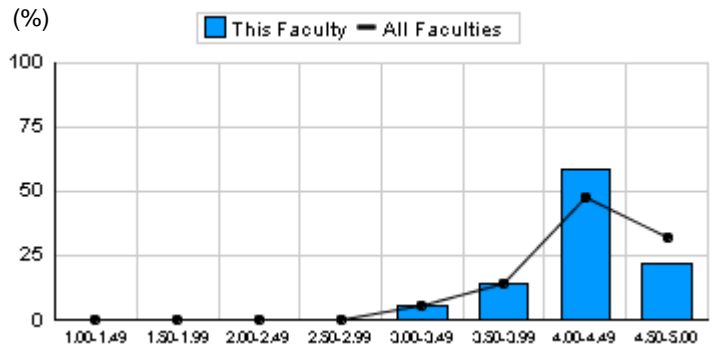


Summation of Median Ratings

Percentiles		
10th = 3.73	20th = 3.97	30th = 4.05
40th = 4.11	50th = 4.20	60th = 4.38
70th = 4.54	80th = 4.64	90th = 4.72

Mean = 4.24
SD = .40
N = 90
Overall Median = 4.20

**Business and Economics**



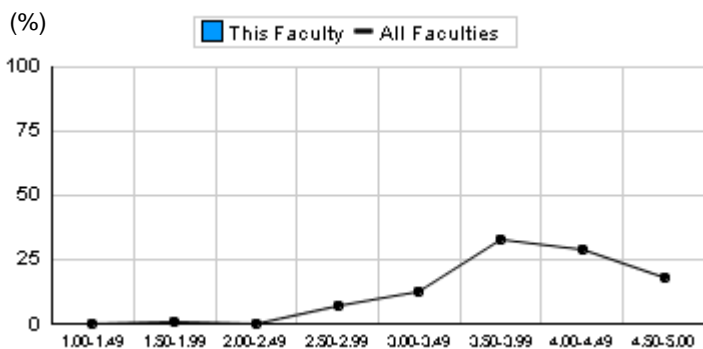
Summation of Median Ratings

Percentiles		
10th = 3.75	20th = 3.97	30th = 4.06
40th = 4.08	50th = 4.14	60th = 4.30
70th = 4.38	80th = 4.54	90th = 4.67

Mean = 4.21
SD = .38
N = 36
Overall Median = 4.14

I found the subject's assignments interesting.

## All Faculties

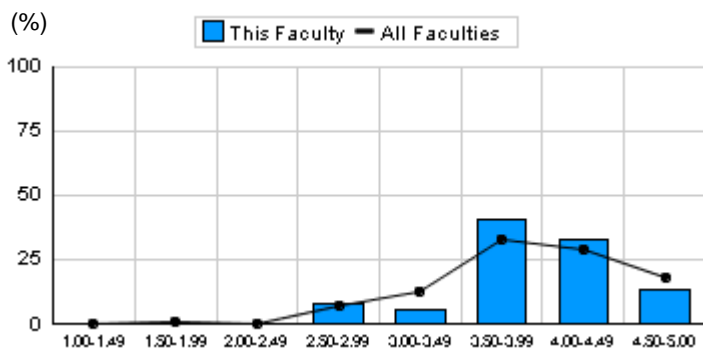


Summation of Median Ratings

Percentiles		
10th = 3.08	20th = 3.41	30th = 3.63
40th = 3.85	50th = 3.95	60th = 4.05
70th = 4.20	80th = 4.38	90th = 4.57

Mean = 3.89
SD = .59
N = 89
Overall Median = 3.95

## Business and Economics



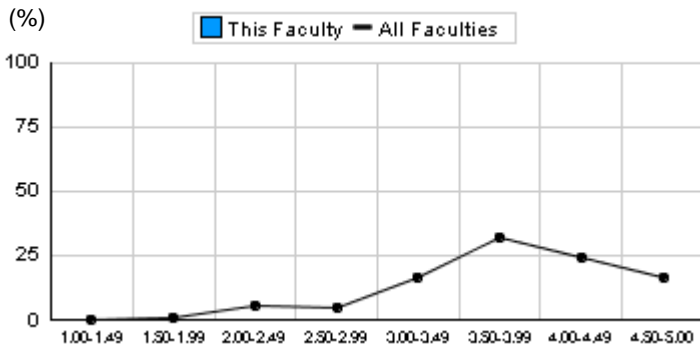
Summation of Median Ratings

Percentiles		
10th = 3.25	20th = 3.50	30th = 3.65
40th = 3.90	50th = 3.96	60th = 4.00
70th = 4.20	80th = 4.36	90th = 4.50

Mean = 3.90
SD = .50
N = 37
Overall Median = 3.96

I found myself wanting to learn more about, or develop further, ideas met in completing my assignments.

**All Faculties**



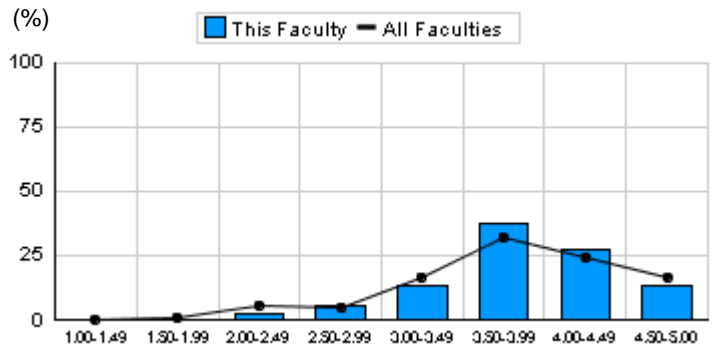
Summation of Median Ratings

**Percentiles**

10th = 2.75	20th = 3.25	30th = 3.50
40th = 3.63	50th = 3.75	60th = 4.00
70th = 4.15	80th = 4.33	90th = 4.57

Mean = 3.76
SD = .67
N = 91
Overall Median = 3.75

**Business and Economics**



Summation of Median Ratings

**Percentiles**

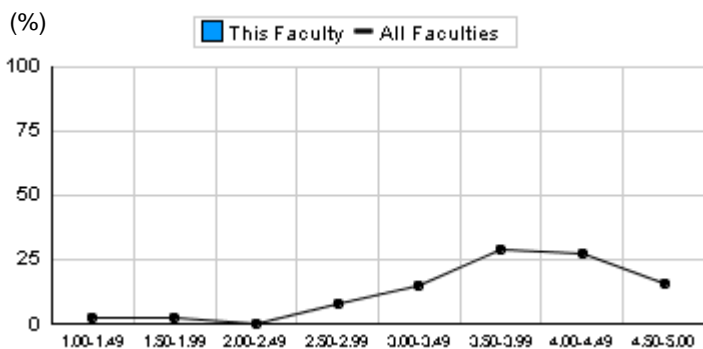
10th = 3.14	20th = 3.33	30th = 3.60
40th = 3.73	50th = 3.83	60th = 3.97
70th = 4.11	80th = 4.29	90th = 4.50

Mean = 3.82
SD = .55
N = 37
Overall Median = 3.83

# Question 2.1

Marked assignments were returned while the work was still fresh enough in my mind for the feedback to be useful.

## All Faculties



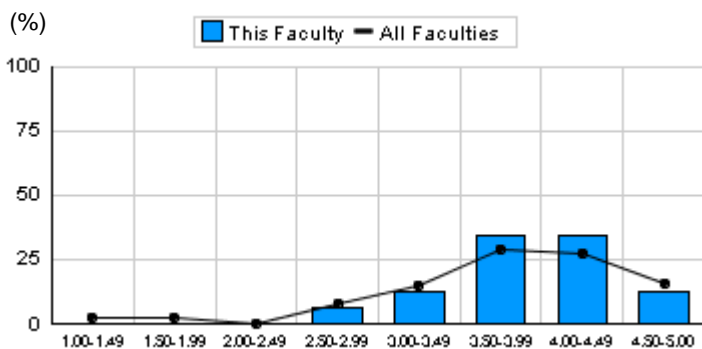
Summation of Median Ratings

### Percentiles

10th = 2.91	20th = 3.21	30th = 3.50
40th = 3.71	50th = 3.91	60th = 4.06
70th = 4.20	80th = 4.35	90th = 4.68

Mean = 3.77
SD = .80
N = 76
Overall Median = 3.91

## Business and Economics



Summation of Median Ratings

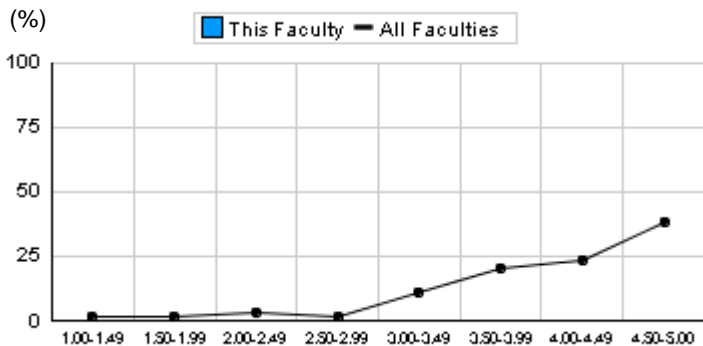
### Percentiles

10th = 3.00	20th = 3.45	30th = 3.66
40th = 3.86	50th = 3.93	60th = 4.04
70th = 4.13	80th = 4.29	90th = 4.50

Mean = 3.92
SD = .51
N = 32
Overall Median = 3.93

Marked assignments were returned with comments (other than just mark or a grade alone) which indicated the standard or level at which I performed.

#### All Faculties

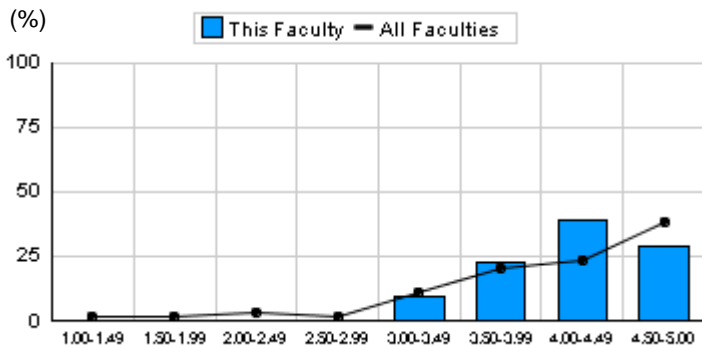


Summation of Median Ratings

Percentiles		
10th = 3.00	20th = 3.50	30th = 3.79
40th = 4.00	50th = 4.16	60th = 4.39
70th = 4.55	80th = 4.65	90th = 4.85

Mean = 4.05
SD = .76
N = 73
Overall Median = 4.16

#### Business and Economics



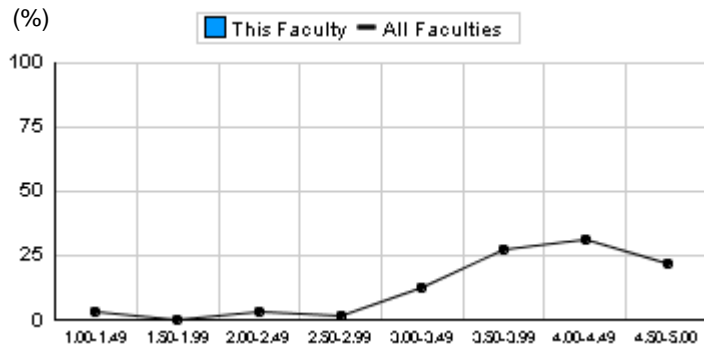
Summation of Median Ratings

Percentiles		
10th = 3.22	20th = 3.79	30th = 3.87
40th = 4.09	50th = 4.27	60th = 4.38
70th = 4.45	80th = 4.55	90th = 4.59

Mean = 4.17
SD = .46
N = 31
Overall Median = 4.27

The comments on my marked assignments indicated the sorts of things that I might do to improve.

**All Faculties**

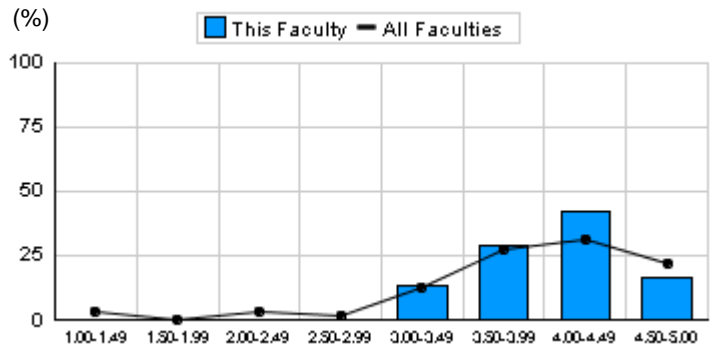


Summation of Median Ratings

Percentiles		
10th = 3.10	20th = 3.56	30th = 3.78
40th = 3.87	50th = 4.04	60th = 4.14
70th = 4.21	80th = 4.50	90th = 4.71

Mean = 3.93
SD = .70
N = 73
Overall Median = 4.04

**Business and Economics**



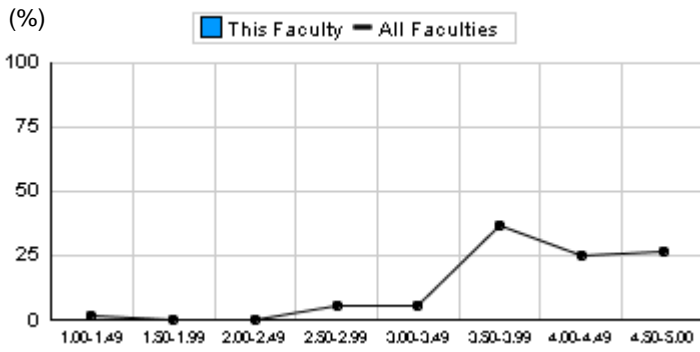
Summation of Median Ratings

Percentiles		
10th = 3.43	20th = 3.64	30th = 3.87
40th = 3.95	50th = 4.08	60th = 4.13
70th = 4.20	80th = 4.29	90th = 4.50

Mean = 4.03
SD = .42
N = 31
Overall Median = 4.08

I was aware that defined criteria had been used when each of my assignments was marked.

**All Faculties**

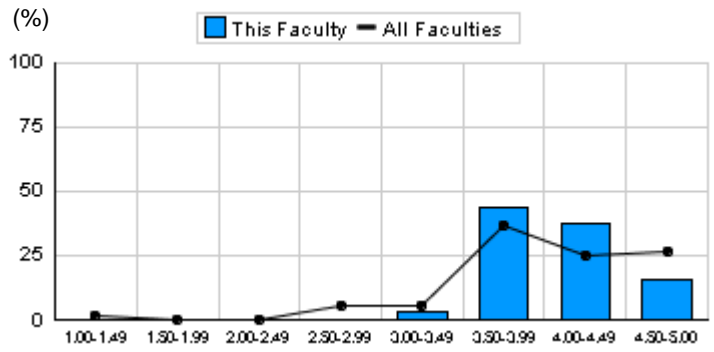


Summation of Median Ratings

Percentiles		
10th = 3.24	20th = 3.67	30th = 3.81
40th = 3.90	50th = 4.00	60th = 4.23
70th = 4.33	80th = 4.55	90th = 4.84

Mean = 4.03
SD = .64
N = 76
Overall Median = 4.00

**Business and Economics**



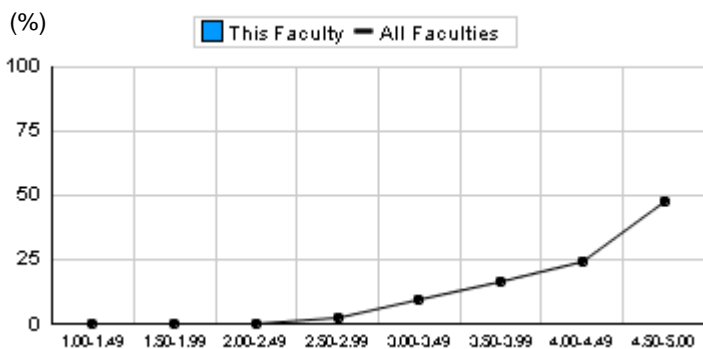
Summation of Median Ratings

Percentiles		
10th = 3.50	20th = 3.67	30th = 3.79
40th = 3.85	50th = 4.05	60th = 4.13
70th = 4.30	80th = 4.33	90th = 4.55

Mean = 4.05
SD = .39
N = 32
Overall Median = 4.05

It was possible for me to discuss my marked assignments with the staff member who had marked them.

#### All Faculties

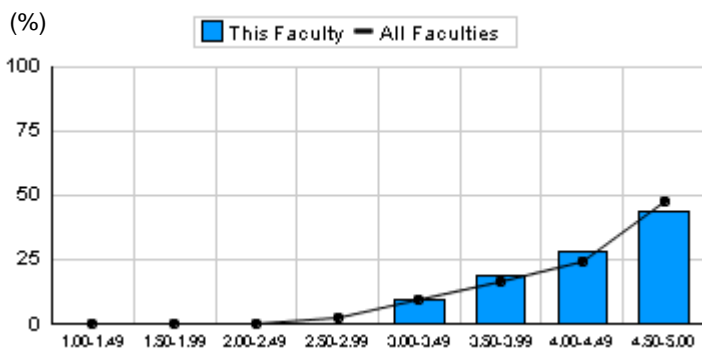


Summation of Median Ratings

Percentiles		
10th = 3.17	20th = 3.82	30th = 4.00
40th = 4.17	50th = 4.33	60th = 4.54
70th = 4.63	80th = 4.69	90th = 4.81

Mean = 4.23
SD = .55
N = 74
Overall Median = 4.33

#### Business and Economics



Summation of Median Ratings

Percentiles		
10th = 3.48	20th = 3.70	30th = 4.11
40th = 4.20	50th = 4.33	60th = 4.50
70th = 4.58	80th = 4.65	90th = 4.75

Mean = 4.24
SD = .48
N = 32
Overall Median = 4.33